

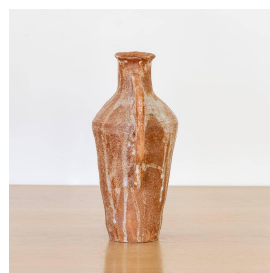
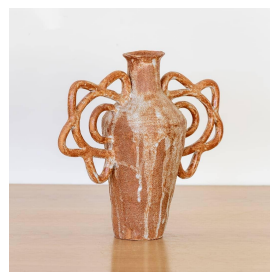
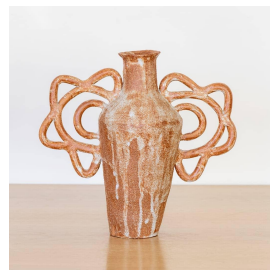


## BLOOM VASE

\$525.00

SKU# CLA0026

### IMAGES



### DESCRIPTION

Hand-built ceramic vase with wavy amphora handles in natural brown clay with drip glaze. Made by French artist Sophie Agullo of Clandestine Ceramique, based in Spain. Her collection can be seen as a love message to the Ocean, from the wavy handles to the sandy texture. Families of vases and pieces are meant to grow and mix together.

\*This is an artisan made product and variances in color, size, and texture are normal.

Measures 11.5" H x 12" W x 5" D

8279 Melrose Ave Los Angeles CA 90046

+1 (323) 438 3210

customerservice@panoplie.com

panoplie.com